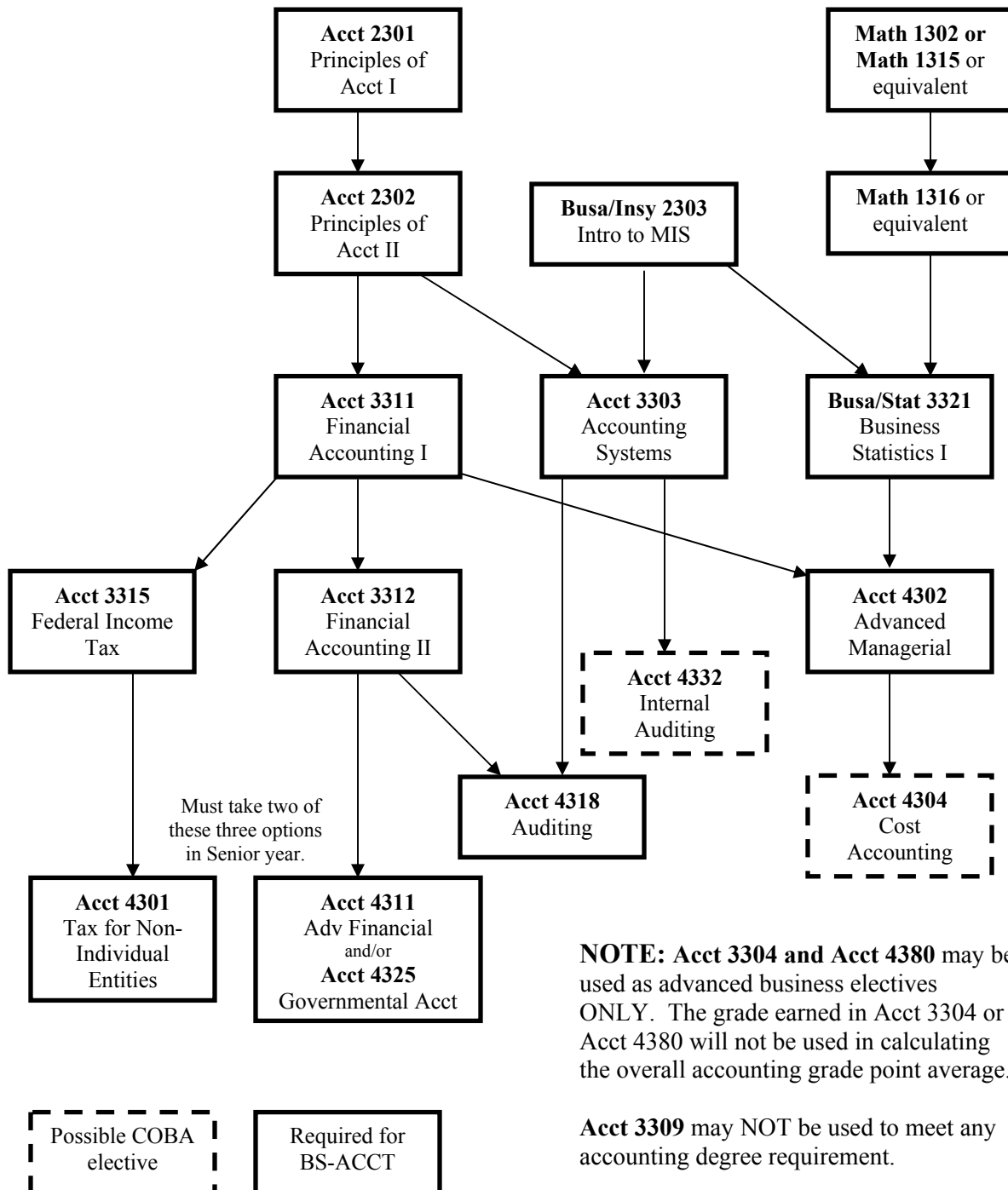


BS - Accounting Course Flow

Prerequisites: Are courses or requirements that must be completed **before enrollment** in a course.



Attention: Busa/Mana 4322 – Organizational Strategy requires senior standing and all business core courses completed prior to enrollment.

For a complete list of degree requirements, course descriptions, or a complete list of prerequisites for business courses, please consult your Undergraduate Catalog.