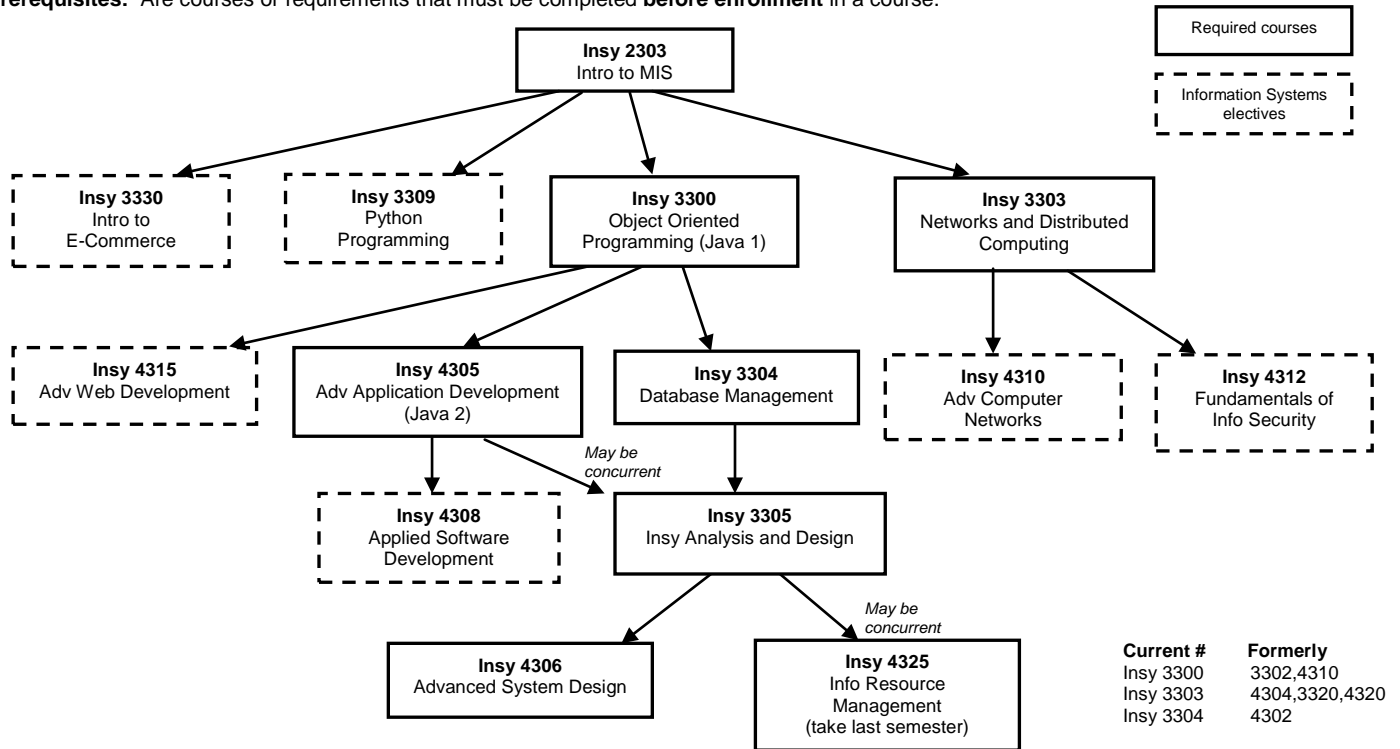


# BS – Information Systems Course Flow

**Prerequisites:** Are courses or requirements that must be completed **before enrollment** in a course.



**Attention:** Mana 4322 – Organizational Strategy requires senior standing and all business core courses completed prior to enrollment. For a complete list of degree requirements, course descriptions, or a complete list of prerequisites for business courses, please consult the *UTA Catalog*.

## Important Reminders:

- ALL STUDENTS are responsible for meeting College of Business Admission Requirements as outlined in the *UTA Catalog*.
- Before enrolling in a course, ALL STUDENTS are responsible for consulting the catalog and completing ALL required Prerequisite courses.
- ALL Business electives must be advanced: 3000 or 4000 level.
- ELECTIVES outside Business may be 1000, 2000, 3000, or 4000 level.

## Notes:

- Due to AACSB accreditation, the following courses are *NOT* used on Business Degree Plans: 1) Intro to Business 2) College Adjustment 3) Secretarial courses 4) Vocational/Technical 5) WECM courses except ITSC 1401
- Courses in EXSS, EXSA, or theory courses in ROTC may be used for outside electives.
- MATH 1302 or 1325 may substitute for MATH 1315. MATH 1426 may substitute for MATH 1316.
- The Language/Philosophy/Culture requirement must be selected from an approved list as found in the *UTA catalog*.
- The Creative Arts requirement is satisfied by one of the following: ART 1301, 1309, 1310; ARCH 1301; MUSI 1300; THEA 1342 or 1343.
- BUSA 2304, ECON 2337, and FINA 2310 *may not* be utilized to meet Business degree requirements, or for grade points. Accounting majors *may not* utilize ACCT 3309 to meet degree requirements or for grade points. Business Foundation courses *may not* be used for credit toward any Business degree.
- Selected ROTC studies courses may substitute for advanced Business electives. See Advisor.
- Selected Industrial Engineering courses *may* substitute for certain Business courses. See Advisor.
- Only computer courses with major Management Information Systems element *may* substitute for INSY 2303. See Degree Plan Evaluator for possible substitution of a specific course.
- Freshman or Sophomore level Statistics classes completed at other institutions *may be* validated if the second half of these courses (Bstat 3322) is completed at UTA.
- Business electives and area of concentration electives should be selected to enrich a student's academic experience. See advisors for assistance in the selection of these electives.