

# INFORMATION SYSTEMS - BS

## Effective Fall 2017 - 2018

### Degree Requirements

<u>GENERAL EDUCATION</u>		<u>BUSINESS CORE</u>	
Engl 1301, 1302	6	Acct 2301	3
Math 1315	3	Acct 2302	3
Math 1316	3	Econ 2305	3
Life and Physical Science	6	Econ 2306	3
Language/Philosophy/Culture*	3	Insy 2303	3
Creative Arts*	3	Bcom 3360	3
Hist 1311 and 1312	6	Blaw 3310	3
Pols 2311 and 2312	6	Bstat 3321	3
Fina 2330 or MANA 2302	3	Fina 3313	3
Coms 1301	3	Mana 3318	3
Non-business Elective	<u>3</u>	Mark 3321	3
		Opma 3306	3
		Mana 4322	<u>3</u>
<b>TOTAL</b>	<b>45</b>	<b>TOTAL</b>	<b>39</b>

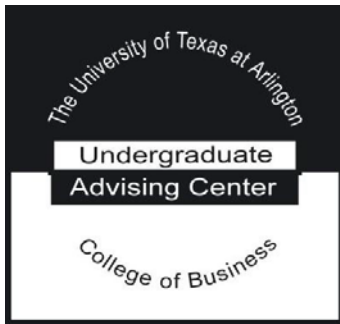
\*For a list of eligible courses, see "General Core Curriculum for a Bachelor's Degree" in the University Catalog <http://catalog.uta.edu>.

**In addition to the above requirements, a student must fulfill course requirements listed below:**

<u>INFORMATION SYSTEMS CONCENTRATION</u>		<u>ADVANCED BUSINESS COURSES</u>	
Insy 3300	3	Business Electives (No Insy)	6
Insy 3303	3	Non-business or Adv.	
Insy 3304	3	Business Electives (No Insy)	<u>3</u>
Insy 3305	3		
Insy 4305	3		
Insy 4306	3		
Insy 4325	3		
Insy Electives	<u>6</u>		
<b>TOTAL</b>	<b>27</b>	<b>TOTAL</b>	<b>9</b>

#### TOTAL NUMBER OF HOURS REQUIRED FOR A BS INFORMATION SYSTEMS DEGREE

GENERAL EDUCATION	45
BUSINESS CORE	39
CONCENTRATION & ELECTIVES	<u>36</u>
<b>TOTAL</b>	<b>120</b>



# INFORMATION SYSTEMS - BS

## Four Year Plan

Fall 2017 - 2018

Complete degree requirements and course prerequisites can be found online at [catalog.uta.edu](http://catalog.uta.edu).

### FIRST YEAR

#### **First Semester - 15 Hours**

ENGL 1301      Composition I  
 MATH 1315      College Algebra for Econ. & Bus. Analysis  
 HIST 1311      History of the U.S. to 1865  
 Life & Physical Science (3 hours)  
 COMS 1301      Fundamentals of Public Speaking

#### **Second Semester - 15 Hours**

ENGL 1302      Composition II  
 MATH 1316      Mathematics for Econ. & Bus. Analysis  
 HIST 1312      History of the U.S. 1865 to Present  
 Life & Physical Science (3 hours)  
 Creative Arts (3 hours)

### SECOND YEAR

#### **First Semester - 15 Hours**

ACCT 2301      Principles of Accounting I  
 ECON 2305      Principles of Macroeconomics  
 Social & Behavioral Science (3 hours)  
 POLS 2311      Government of the U.S  
 Language, Philosophy & Culture (3 hours)

#### **Second Semester - 15 Hours**

ACCT 2302      Principles of Accounting II  
 ECON 2306      Principles of Microeconomics  
 INSY 2303      Introduction to M.I.S. & Data  
 POLS 2312      State & Local Government  
 Non-Business Elective (3 hours)

### THIRD YEAR

#### **First Semester - 15 Hours**

INSY 3300      Introduction to Programming  
 INSY 3303      Comp Networks & Dist Computing  
 BLAW 3310      Legal & Ethical Environ of Bus  
 FINA 3313      Business Finance  
 MANA 3318      Managing Organizational Behavior

#### **Second Semester - 15 Hours**

INSY 3304      Database Management Systems  
 INSY 4305      Advanced Application Development  
 BCOM 3360      Effective Business Communication  
 MARK 3321      Principles of Marketing  
 \*Advanced Business Elective (3 Hours)

### FOURTH YEAR

#### **First Semester - 15 Hours**

INSY 3305      Information Systems Analysis & Design  
 Advanced Information System Elective (3 Hours)  
 Advanced Information System Elective (3 Hours)  
 BSTAT 3321      Business Statistics I  
 \*Advanced Business Elective (3 Hours)

#### **Second Semester - 15 Hours**

INSY 4306      Advanced Systems Development  
 INSY 4325      Information Resource Management  
 MANA 4322      Organizational Strategy  
 OPMA 3306      Operations Management  
 \*Advanced Business or Non-Business Elective (3 Hours)

**This timeline is a recommendation, strategically developed for students' success.**

- It establishes a strong foundation in the freshman and sophomore years.
- It positions pre-requisite courses appropriately for advanced coursework.
- It provides a balance in coursework throughout each year.
- It promotes a timely graduation within four years.

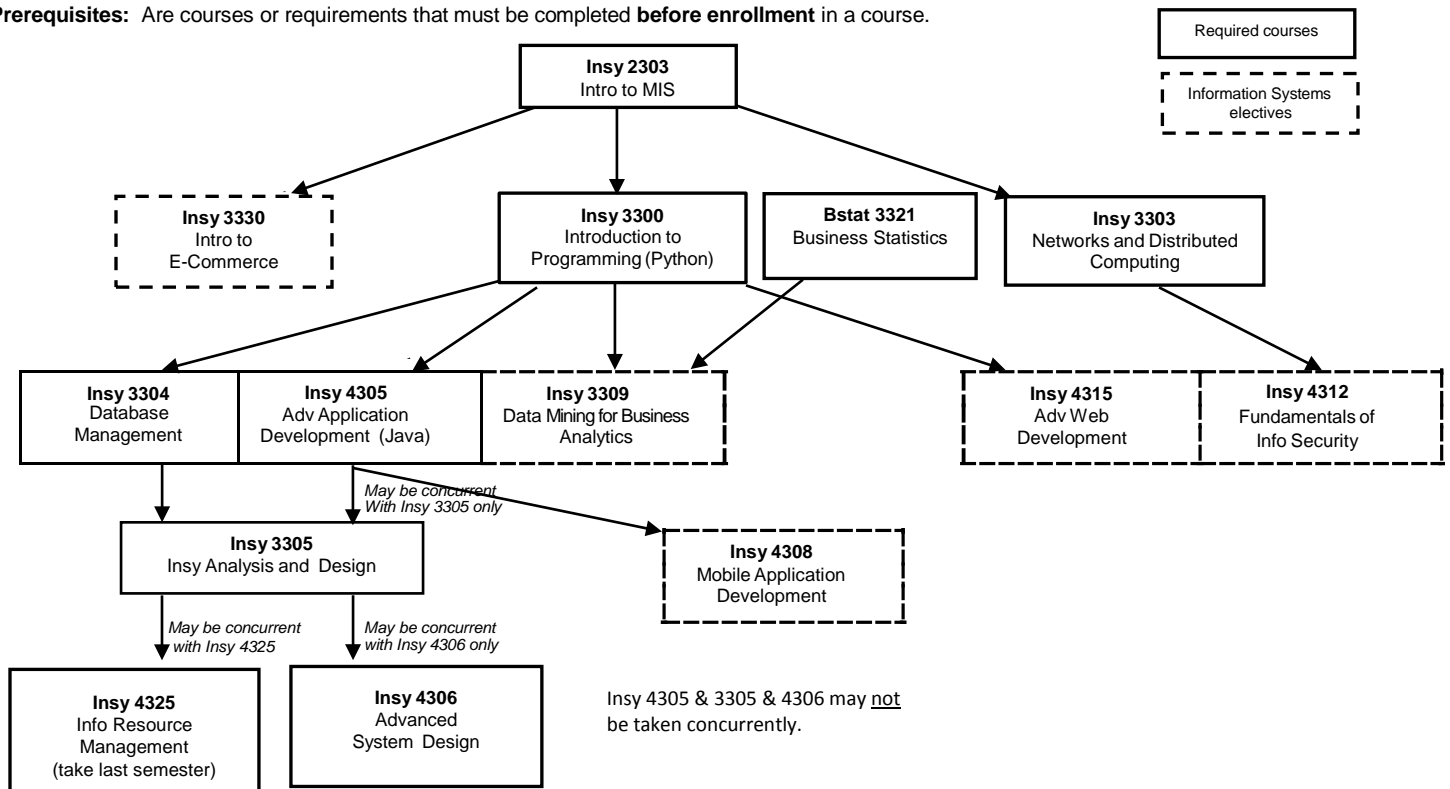
All students are subject to College of Business Admission Requirements.

\*Advanced Business Electives may not include any major prefix course.

<http://www.uta.edu/business/ugadvise>

# BS – Information Systems Course Flow

**Prerequisites:** Are courses or requirements that must be completed **before enrollment** in a course.



**Attention:** Mana 4322 (Organizational Strategy) prerequisites include ACCT 2301 and ACCT 2302, BSTAT 3321, ECON 2305 and ECON 2306, FINA 3313, MANA 3318 and MARK 3321. One of the following junior level courses may be taken concurrently: BSTAT 3321, FINA 3313, MANA 3318 or MARK 3321.

## Important Reminders

- ALL STUDENTS are responsible for meeting College of Business Admission Requirements as outlined in the UTA Catalog.
- Before enrolling in a course, ALL STUDENTS are responsible for consulting the catalog and completing ALL required Prerequisite courses.
- ALL Business electives must be advanced: 3000 or 4000 level.
- ELECTIVES outside Business may be 1000, 2000, 3000, or 4000 level.
- COB Residency Requirements:
  - 39 hours of business coursework completed at UTA.
  - 24 of last 30 hours of Jr/Sr level coursework must be completed at UTA.
  - Transfer courses must be pre-approved by Business Undergraduate Advising.

## Notes

- Due to AACSB accreditation, the following courses are NOT used on Business Degree Plans: 1) Intro to Business 2) College Adjustment 3) Secretarial courses 4) Vocational/Technical 5) WECM courses.
- Courses in EXSS, EXSA, or theory courses in ROTC may be used for outside electives.
- MATH 1302 or 1325 may substitute for MATH 1315. MATH 1426 may substitute for MATH 1316.
- BUSA 2304, ECON 2337, and FINA 2310 may not be utilized to meet Business degree requirements or for grade points. Accounting majors may not utilize ACCT 3309 to meet degree requirements or for grade points. Business Foundation courses may not be used for credit toward any Business degree.
- Selected ROTC studies courses may substitute for advanced Business electives. See Advisor.
- Selected Industrial Engineering courses may substitute for certain Business courses. See Advisor.
- Only computer courses with major Management Information Systems element may substitute for INSY 2303. See Degree Plan Evaluator for possible substitution of a specific course.
- Freshman or Sophomore level Statistics classes completed at other institutions may be validated if the second half of these courses (Bstat 3322) is completed at UTA.
- Business electives and area of concentration electives should be selected to enrich a student's academic experience. See advisors for assistance in the selection of these electives.
- To achieve graduation within four years, enroll in (15) hours each long semester (fall and spring) for total of (30) hours per academic year. An alternative to this is enrolling in (12) hours during each long semester (fall and spring) and (6) hours during the summer.

<http://www.uta.edu/business/ugadvise>