

# ECONOMICS - BS

Effective Fall 2017 - 2018

## Degree Requirements

<u>GENERAL EDUCATION</u>		<u>BUSINESS CORE</u>	
Engl 1301, 1302	6	Acct 2301	3
Math 1315	3	Acct 2302	3
Math 1316	3	Insy 2303	3
Life and Physical Science (w/Lab)*	6	Bcom3360	3
Language, Philosophy, Culture*	3	Blaw 3310	3
Creative Arts	3	BStat 3321	3
Hist 1311 and 1312	6	Fina 3313	<u>3</u>
Pols 2311 and 2312	6		
Fina 2330 or Mana 2302	3	<b>TOTAL</b>	<b>21</b>
Coms 1301	3		
Non-business Elective	<u>3</u>	<b><u>OTHER ELECTIVES</u></b>	
		INSY 3300	
		Sufficient to Total 120 Hrs.	
		Minimum 6 hours advanced.	
		(may include a minor) No	
		Econ.	
<b>TOTAL</b>	<b>45</b>		<b>24</b>

In addition to the above requirements, a student must fulfill course requirements listed below:

### ECONOMICS CONCENTRATION

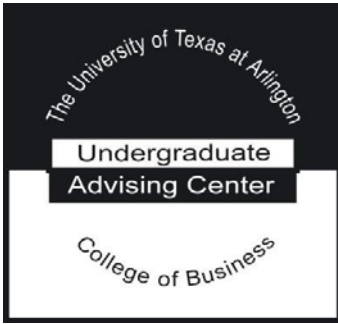
Econ 2305, 2306	6
Econ 3303	3
Econ 3310	3
Econ 3312	3
Econ 3318	3
Econ 4318	3
Econ Elective (4000 level)**	9
<b>TOTAL</b>	<b>30</b>

\* For a list of eligible courses, see "General Core Curriculum for a Bachelor's Degree" in the University Catalog <http://catalog.uta.edu>.

\*\* Must choose 3 from the following courses: ECON 4311, ECON 4320, ECON 4321, ECON 4322, ECON 4323, ECON 4325, ECON 4330.

### TOTAL NUMBER OF HOURS REQUIRED FOR A BS ECONOMICS DEGREE

GENERALEDUCATION	45
BUSINESS CORE	21
OTHERELECTIVES	24
ECONOMICS CONCENTRATION	<u>30</u>
<b>TOTAL</b>	<b>120</b>



# ECONOMICS - BS

## Four Year Plan

Fall 2017 - 2018

Complete degree requirements and course prerequisites can be found at <http://catalog.uta.edu>.

### FIRST YEAR

---

#### **First Semester - 15 Hours**

ENGL 1301      Composition I  
MATH 1315      College Algebra for Econ. & Bus. Analysis  
HIST 1311      History of the U.S. to 1865  
Life & Physical Science (3 hours)  
COMS 1301      Fundamentals of Public Speaking

#### **Second Semester - 15 Hours**

ENGL 1302      Composition II  
MATH 1316      Mathematics for Econ. & Bus. Analysis  
HIST 1312      History of the U.S. 1865 to Present  
Life & Physical Science (3 hours)  
Creative Arts (3 hours)

### SECOND YEAR

---

#### **First Semester - 15 Hours**

ACCT 2301      Principles of Accounting I  
ECON 2305      Principles of Macroeconomics  
Social & Behavioral Science (3 hours)  
POLS 2311      Government of the U.S.  
Language, Philosophy & Culture (3 hours)

#### **Second Semester - 15 Hours**

ACCT 2302      Principles of Accounting II  
ECON 2306      Principles of Microeconomics  
INSY 2303      Introduction to M.I.S. & Data Processing  
POLS 2312      State & Local Government  
Non-Business Elective (3 hours)

### THIRD YEAR

---

#### **First Semester - 15 Hours**

ECON 3303      Money & Banking  
ECON 3310      Microeconomics  
INSY 3300      Introduction to Programming  
FINA 3313      Business Finance  
Minor Requirement (3 Hours)

#### **Second Semester - 15 Hours**

ECON 3312      Macroeconomics  
Economics Elective 4000 (3 Hours)  
BSTAT 3321      Business Statistics  
BCOM 3360      Effective Business Communications  
Minor Requirement (3 Hours)

### FOURTH YEAR

---

#### **First Semester - 15 Hours**

ECON 3318      Data Analysis and visualization  
Economics Elective 4000 (3 Hours)  
BLAW 3310      Legal & Ethical Environment of Business  
Minor Requirement (3 Hours)  
Minor Requirement (3 Hours)

#### **Second Semester - 15 Hours**

ECON 4318      Economic Data Analysis Capstone  
Economics Elective 4000 (3 Hours)  
Minor Requirement (3 Hours)  
Minor Requirement (3 Hours)  
Other Elective (3 Hours)

**This timeline is a recommendation, strategically developed for students' success.**

- It establishes a strong foundation in the freshman and sophomore years.
- It positions pre-requisite courses appropriately for advanced coursework.
- It provides a balance in coursework throughout each year.
- It promotes a timely graduation within four years.

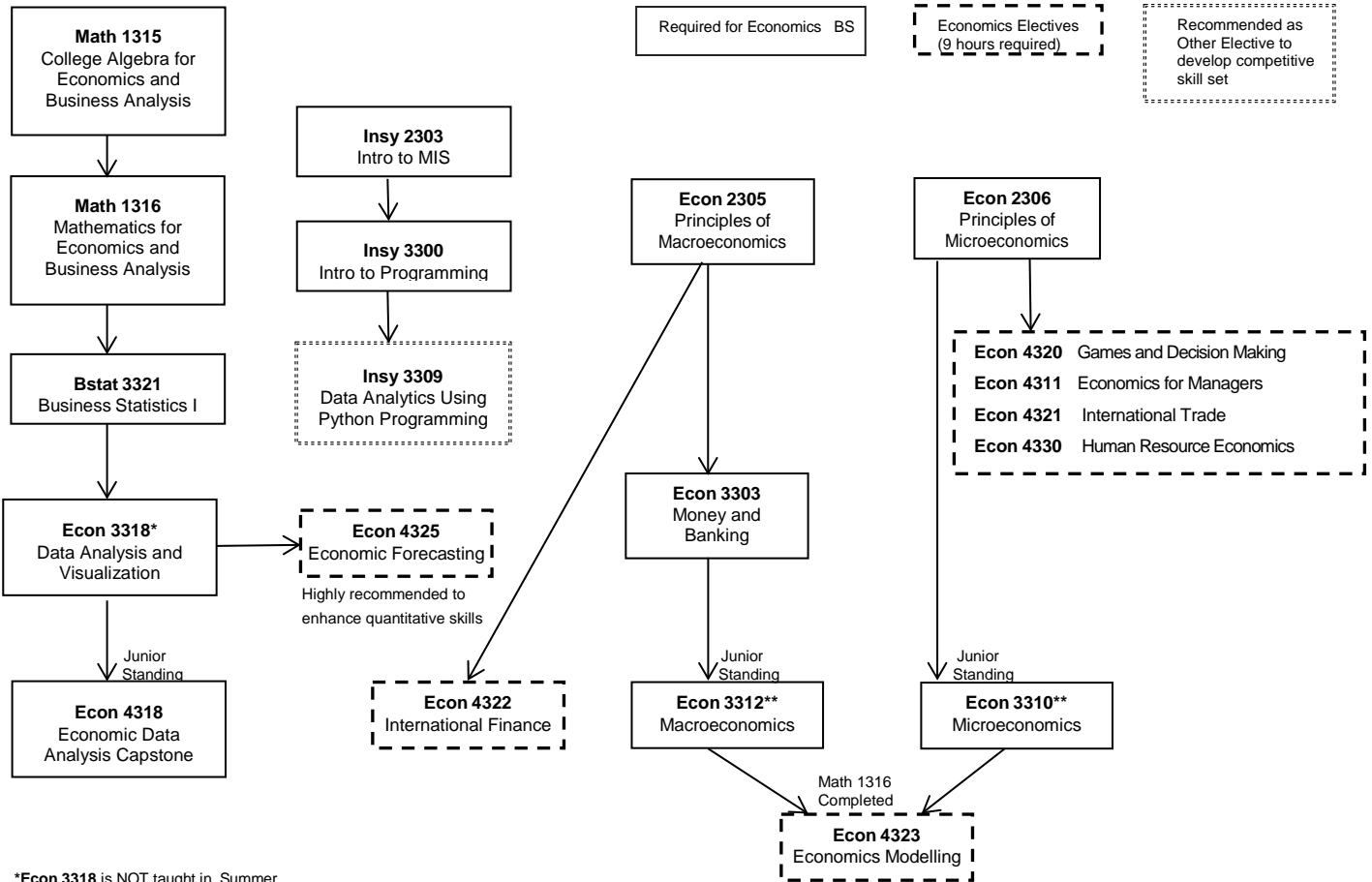
All students are subject to College of Business Admission Requirements.

\*Advanced Business Electives may not include any major prefix course.

<http://www.uta.edu/business/ugadvise>

# BS - Economics Course Flow (2017-2018)

**Prerequisites:** Are courses or requirements that must be completed **before enrollment** in a course.



\*Econ 3318 is NOT taught in Summer

\*\*Economics majors should complete Econ 3310 and 3312 prior to taking other junior/senior level Economics courses.

## Important Reminders:

- ALL STUDENTS are responsible for meeting College of Business Admission Requirements as outlined in the *UTA Catalog*.
- Before enrolling in a course, ALL STUDENTS are responsible for consulting the catalog and completing ALL required Prerequisite courses.
- ALL Business electives must be advanced: 3000 or 4000 level.
- ELECTIVES outside Business may be 1000, 2000, 3000, or 4000 level.
- COB Residency Requirements:
  - 24 hours of business coursework completed at UTA.
  - 24 of last 30 hours of Jr/Sr level coursework must be completed at UTA.
  - Transfer courses must be pre-approved by Business Undergraduate Advising.

## Notes:

- Due to AACSB accreditation, the following courses are NOT used on Business Degree Plans: 1) Intro to Business 2) College Adjustment 3) Secretarial courses 4) Vocational/Technical 5) WECM courses.
- Courses in EXSS, EXSA, or theory courses in ROTC may be used for outside electives.
- MATH 1302 or 1325 may substitute for MATH 1315. MATH 1426 may substitute for MATH 1316.
- The Language/Philosophy/Culture requirement must be selected from an approved list as found in the *UTA catalog*.
- The Creative Arts requirement is satisfied by one of the following: ART 1301, 1309, 1310; ARCH 1301; MUSI 1300; THEA 1342 or 1343.
- BUSA 2304, ECON 2337, and FINA 2310 may not be utilized to meet Business degree requirements, or for grade points. Accounting majors may not utilize ACCT 3309 to meet degree requirements or for grade points. Business Foundation courses may not be used for credit toward any Business degree.
- Selected ROTC studies courses may substitute for advanced Business electives. See Advisor.
- Selected Industrial Engineering courses may substitute for certain Business courses. See Advisor.
- Only computer courses with major Management Information Systems element may substitute for INSY 2303. See Degree Plan Evaluator for possible substitution of a specific course.
- Freshman or Sophomore level Statistics classes completed at other institutions may be validated if the second half of these courses (Bstat 3322) is completed at UTA.
- Business electives and area of concentration electives should be selected to enrich a student's academic experience. See advisors for assistance in the selection of these electives.
- To achieve graduation within four years, enroll in (15) hours each long semester (fall and spring) for total of (30) hours per academic year. An alternative to this is enrolling in (12) hours during each long semester (fall and spring) and (6) hours during the summer.