

ACCOUNTING- BS

Effective Fall 2017 - 2018

Degree Requirements

<u>GENERAL EDUCATION</u>		<u>BUSINESS CORE</u>	
Engl 1301, 1302	6	Acct 2301	3
Math 1315	3	Acct 2302	3
Math 1316	3	Econ 2305	3
Life and Physical Science (w/Lab)*	6	Econ 2306	3
Language, Philosophy, Culture*	3	Insy 2303	3
Creative Arts*	3	Bcom 3360****	3
Hist 1311 and 1312	6	Blaw 3310	3
Pols 2311 and 2312	6	Bstat 3321	3
Fina 2330 or Mana 2302	3	Fina 3313	3
Coms 1301	3	Mana 3318	3
Non-business Elective	<u>3</u>	Mark 3321	3
		Mana 4322	<u>3</u>
TOTAL	45	TOTAL	36

In addition to the above requirements, a student must fulfill course requirements listed below:

<u>ACCOUNTING CONCENTRATION</u>		<u>ADVANCED BUSINESS COURSES</u>	
Acct 3303, 3311**	6	Econ Elective	3
Acct 3312, 3315	6	Business Electives***	<u>15</u>
Acct 4302, 4318****	6		
Acct 4304 or 4325****	<u>3</u>		
TOTAL	21	TOTAL	18

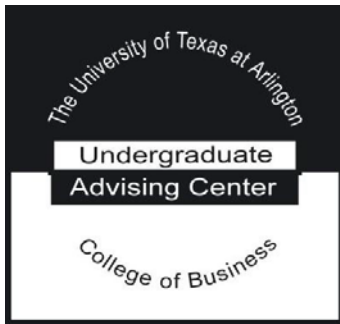
**Must pass Departmental Entrance Exam before enrollment.
 ***Acct 3304 or Acct 4380 may be used as advanced business electives only. If completed, the grade earned in Acct 3304 or Acct 4380 will not be used in calculating the overall accounting grade point average. ACCT 3309 will not be used towards an Accounting degree.
 ****Accounting students interested in pursuing the Fast-Track Accounting Program should not take these courses until speaking with an Accounting Advisor.

See State Board website for information on CPA requirements. www.tsbpa.state.tx.us

TOTAL NUMBER OF HOURS REQUIRED FOR A BS ACCOUNTING DEGREE

GENERALEDUCATION	45
BUSINESSCORE	36
CONCENTRATION&ELECTIVES	<u>39</u>
TOTAL	120

*For a list of eligible courses, see "General Core Curriculum for a Bachelor's Degree" in the University Catalog <http://catalog.uta.edu> .
<http://web.uta.edu/business/ugadvise>



ACCOUNTING - BS

Four Year Plan

Fall 2017 - 2018

Complete degree requirements and course prerequisites can be found online at catalog.uta.edu.

FIRST YEAR

First Semester - 15 Hours

ENGL 1301 Composition I
 MATH 1315 College Algebra for Econ. & Bus. Analysis
 HIST 1311 History of the U.S. to 1865
 Life & Physical Science (3 hours)
 COMS 1301 Fundamentals of Public Speaking

Second Semester - 15 Hours

ENGL 1302 Composition II
 MATH 1316 Mathematics for Econ. & Bus. Analysis
 HIST 1312 History of the U.S. 1865 to Present
 Life & Physical Science (3 hours)
 Creative Arts (3 hours)

SECOND YEAR

First Semester - 15 Hours

ACCT 2301 Principles of Accounting I
 ECON 2305 Principles of Macroeconomics
 Social & Behavioral Science (3 hours)
 POLS 2311 Government of the U.S.
 Language, Philosophy & Culture (3 hours)

Second Semester - 15 Hours

ACCT 2302 Principles of Accounting II
 ECON 2306 Principles of Microeconomics
 INSY 2303 Introduction to M.I.S. & Data Processing
 POLS 2312 State & Local Government
 Non-Business Elective (3 hours)

THIRD YEAR

First Semester - 15 Hours

ACCT 3311 Financial Accounting I
 BLAW 3310 Legal & Ethical Environment of Business
 FINA 3313 Business Finance
 MANA 3318 Managing Organizational Behavior
 Advanced Economics Elective (3 Hours)

Second Semester - 15 Hours

ACCT 3303 Introduction to Accounting Information Systems
 ACCT 3312 Financial Accounting II
 BSTAT 3321 Business Statistics I
 MARK 3321 Principles of Marketing
 *Advanced Business Elective (3 Hours)

FOURTH YEAR

First Semester - 15 Hours

ACCT 3315 Principles of Federal Income Tax
 ACCT 4302 Acct in Managerial Planning & Control
 *Advanced Business Elective (3 Hours)
 *Advanced Business Elective (3 Hours)
 *Advanced Business Elective (3 Hours)

Second Semester - 15 Hours

ACCT 4304/4325 Cost Accounting/Governmental Accounting
 ACCT 4318 Auditing
 BCOM 3360 Effective Business Communications
 MANA 4322 Organizational Strategy
 *Advanced Business Elective (3 Hours)

This timeline is a recommendation, strategically developed for students' success.

- It establishes a strong foundation in the freshman and sophomore years.
- It positions pre-requisite courses appropriately for advanced coursework.
- It provides a balance in coursework throughout each year.
- It promotes a timely graduation within four years.

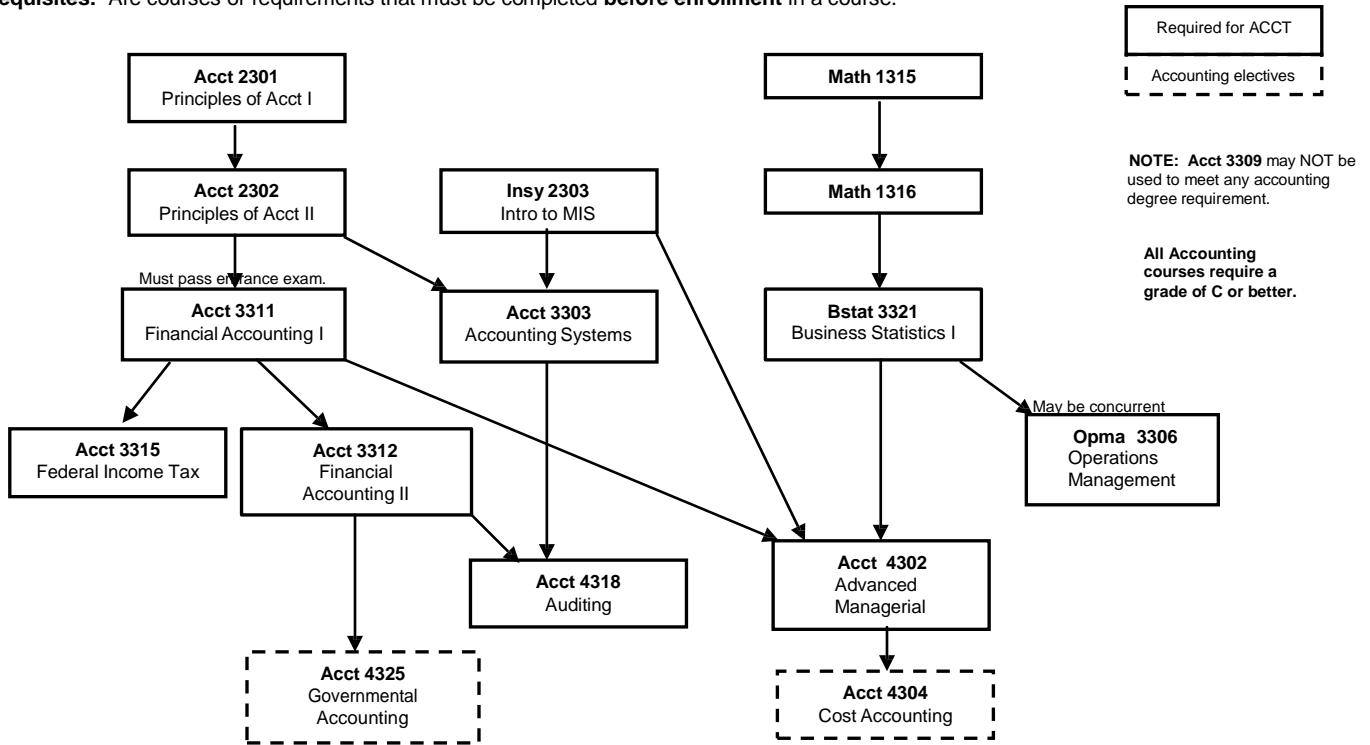
All students are subject to College of Business Admission Requirements.

*Advanced Business Electives may not include any major prefix course.

<http://www.uta.edu/business/ugadvise>

BS - Accounting Course Flow (2017-2018)

Prerequisites: Are courses or requirements that must be completed **before enrollment** in a course.



Attention: Mana 4322 (Organizational Strategy) prerequisites include ACCT 2301 and ACCT 2302, BSTAT 3321, ECON 2305 and ECON 2306, FINA 3313, MANA 3318 and MARK 3321. One of the following junior level courses may be taken concurrently: BSTAT 3321, FINA 3313, MANA 3318 or MARK 3321.

Recommended Business Elective Tracks for Accounting Majors

<u>Finance Industry</u>		<u>Information Systems</u>		<u>Sales and Marketing</u>	
ECON 3303	Money and Banking	INSY 3303	Computer Networks and Distributed Computing	MARK 3322	Professional Selling
FINA 3317	Financial Institutions and Markets	INSY 3309	Data Mining for Business Analytics	MARK 3323	Integrated Marketing Communication
FINA 4311	Money and Capital Markets	INSY 4312	Fundamentals of Information Security	MARK 4308	Management and Leadership of the Sales Force
FINA 4315	Advanced Business Financial Analysis			MANA 4341	Negotiations and Conflict Resolution
FINA 4319	Financial Derivatives				

Important Reminders

- ALL STUDENTS are responsible for meeting College of Business Admission Requirements as outlined in the *UTA Catalog*.
- Before enrolling in a course, ALL STUDENTS are responsible for consulting the catalog and completing ALL required Prerequisite courses.
- ALL Business electives must be advanced: 3000 or 4000 level.
- ELECTIVES outside Business may be 1000, 2000, 3000, or 4000 level.
- COB Residency Requirements:
 - 39 hours of business coursework completed at UTA.
 - 24 of last 30 hours of Jr/Sr level coursework must be completed at UTA.
 - Transfer courses must be pre-approved by Business Undergraduate Advising.

Notes

- Due to AACSB accreditation, the following courses are NOT used on Business Degree Plans: 1) Intro to Business 2) College Adjustment 3) Secretarial courses 4) Vocational/Technical 5) WECM courses.
- Courses in EXSS, EXSA, or theory courses in ROTC may be used for outside electives.
- MATH 1302 or 1325 may substitute for MATH 1315. MATH 1426 may substitute for MATH 1316.
- BUSA 2304, ECON 2337, and FINA 2310 may not be utilized to meet Business degree requirements or for grade points. Accounting majors may not utilize ACCT 3309 to meet degree requirements or for grade points. Business Foundation courses may not be used for credit toward any Business degree.
- Selected ROTC studies courses may substitute for advanced Business electives. See Advisor.
- Selected Industrial Engineering courses may substitute for certain Business courses. See Advisor.
- Only computer courses with major Management Information Systems element may substitute for INSY 2303. See Degree Plan Evaluator for possible substitution of a specific course.
- Freshman or Sophomore level Statistics classes completed at other institutions may be validated if the second half of these courses (Bstat 3322) is completed at UTA.
- Business electives and area of concentration electives should be selected to enrich a student's academic experience. See advisors for assistance in the selection of these electives.
- To achieve graduation within four years, enroll in (15) hours each long semester (fall and spring) for total of (30) hours per academic year. An alternative to this is enrolling in (12) hours during each long semester (fall and spring) and (6) hours during the summer.