

INTERNATIONAL BUSINESS FRENCH - BBA

Effective Fall 2016 - 2017

Degree Requirements

<u>GENERAL EDUCATION</u>		<u>BUSINESS CORE</u>	
Engl 1301, 1302	6	Acct 2301	3
Math 1315	3	Acct 2302	3
Math 1316	3	Econ 2305	**
Science (Natural Science with Lab)	6	Econ 2306	3
Lang/Phil/Cult (Fren 2314)*	3	Insy 2303	3
Creative Arts	3	Bcom 3360	3
Hist 1311 and 1312	6	Blaw 3310	3
Pols 2311 and 2312	6	Bstat 3321	3
Social/Behavior Science (Econ 2305)**	3	Fina 3313	3
Coms 1301	<u>3</u>	Mana 3318	3
		Mark 3321	3
		Mana 4322	<u>3</u>
TOTAL	42	TOTAL	33

* Fren 2314 is satisfied by completion of Language/Philosophy/Culture requirement.
 ** Econ 2305 is satisfied by completion of Social/behavior Science requirement.

In addition to the above requirements, a student must fulfill course requirements listed below:

<u>DUAL CONCENTRATIONS AND ELECTIVES</u>					
<u>INTERNATIONAL BUSINESS</u>		<u>FOREIGN LANGUAGE</u>		<u>ADVANCED COURSES</u>	
Blaw 4310	3	Fren 1441, 1442***	8	Business Electives	<u>9</u>
Econ 4306, 4321, or 4322	3	Fren 2313, 2314*	3	Students will take FREN 3311 or	
Fina 4324	3	Fren 3303	3	3312 and are encouraged to	
Mana 4321	3	Fren 4314	3	include three hrs. of additional	
Mark 4325	<u>3</u>	Fren 4334, 4335	<u>6</u>	French language courses in	
				this area.	
TOTAL	15	TOTAL	23	TOTAL	9

*** Student will be placed in appropriate language level upon completion of a written and/or a verbal competency exam administered by Testing Services in Davis Hall. Students are expected to consult with the Modern Language advisor concerning French courses.

Students are strongly encouraged to study abroad. The College of Business, the Department of Modern Languages, and the International Office currently work together in assisting student participation in existing exchange programs. Furthermore, the University will continue to develop exchange agreements with other recognized international universities.

TOTAL NUMBER OF HOURS REQUIRED FOR A BBA INTERNATIONAL BUSINESS-FRENCH DEGREE

GENERAL EDUCATION	36
BUSINESS CORE	36
DUAL CONCENTRATIONS	41
APPROVED ELECTIVES	<u>9</u>
TOTAL	122

Web Site: www.uta.edu/business/ugadvise



INTERNATIONAL BUSINESS/ MODERN LANGUAGE - BBA

Chinese, French, German, Russian, Spanish

Four Year Plan

Fall 2016 - 2017

Complete degree requirements and course prerequisites can be found online at catalog.uta.edu.

FIRST YEAR

First Semester - 16 Hours

ENGL 1301 Composition I
MATH 1315 College Algebra for Econ. & Bus. Analysis
HIST 1311 History of the U.S. to 1865
Life & Physical Science (3 hours)
Modern Language Requirement - Level I (4 hours)

Second Semester - 16 Hours

ENGL 1302 Composition II
MATH 1316 Mathematics for Econ. & Bus. Analysis
HIST 1312 History of the U.S. 1865 to Present
Life & Physical Science (3 hours)
Modern Language Requirement - Level II (4 hours)

SECOND YEAR

First Semester - 15 Hours

ACCT 2301 Principles of Accounting I
ECON 2305 Principles of Macroeconomics
POLS 2311 Government of the U.S.
COMS 1301 Fundamentals of Public Speaking
Modern Language Requirement - Level III (3 hours)

Second Semester - 15 Hours

ACCT 2302 Principles of Accounting II
ECON 2306 Principles of Microeconomics
INSY 2303 Introduction to M.I.S. & Data Processing
POLS 2312 State & Local Government
Modern Language Requirement - Level IV (3 hours)

THIRD YEAR

First Semester - 15 Hours

Advanced Modern Language (3 Hours)
ECON 4306 or 4321 or 4322
BLAW 3310 Legal & Ethical Environment of Business
FINA 3313 Business Finance
MANA 3318 Managing Organizational Behavior

Second Semester - 15 Hours

Advanced Modern Language (3 Hours)
MANA 4321 International Management
BSTAT 3321 Business Statistics I
MARK 3321 Principles of Marketing
Creative Arts (3 hours)

FOURTH YEAR

First Semester - 15 Hours

Advanced Modern Language (3 hours)
FINA 4324 International Corporate Finance
MARK 4325 International Marketing
BCOM 3360 Effective Business Communications
*Advanced Elective (3 Hours)

Second Semester - 15 Hours

Advanced Modern Language (3 hours)
BLAW 4310 Basic International Law for Business
MANA 4322 Organizational Strategy
*Advanced Elective (3 Hours)
*Advanced Elective (3 Hours)

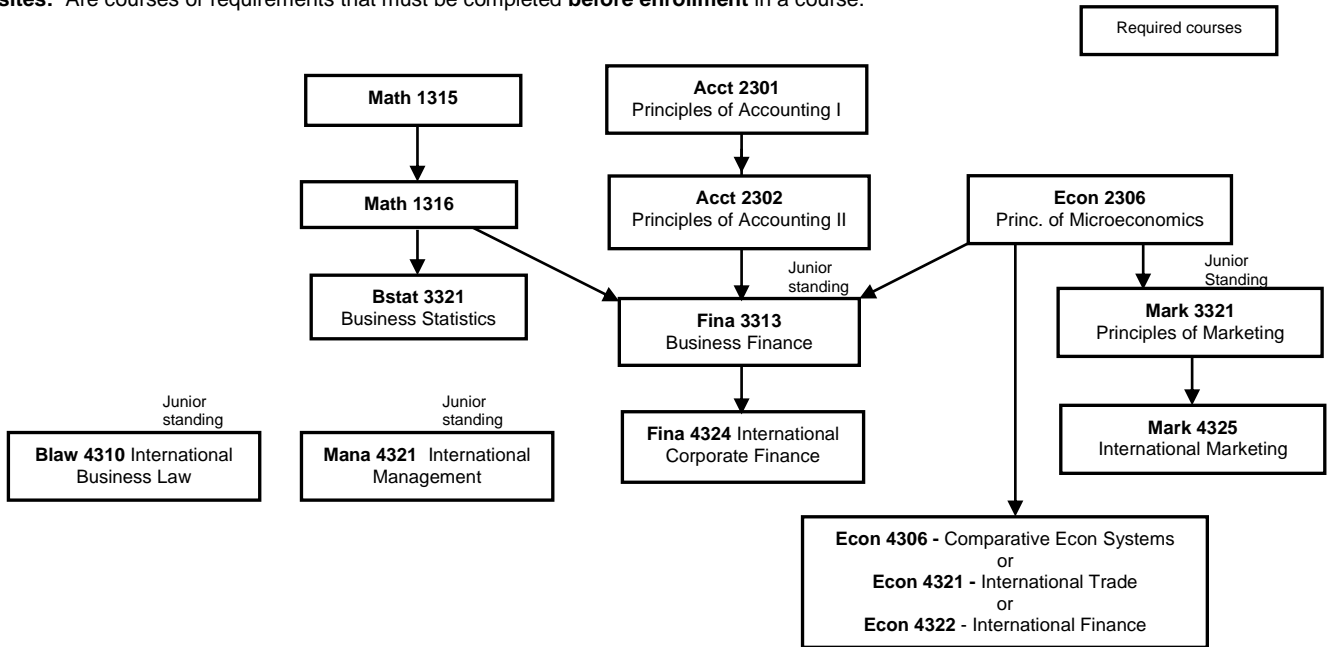
This timeline is a recommendation. Please consult your Business Advisor as course availability is subject to change.

All students are subject to College of Business Admission Requirements.

**Advanced Electives may include no more than 6 hours of Language specialization courses.*

BBA – International Business Course Flow

Prerequisites: Are courses or requirements that must be completed **before enrollment** in a course.



Attention: Mana 4322 – Organizational Strategy requires senior standing and all business core courses completed prior to enrollment. For a complete list of degree requirements, course descriptions, or a complete list of prerequisites for business courses, please consult the *UTA Catalog*.

Important Reminders:

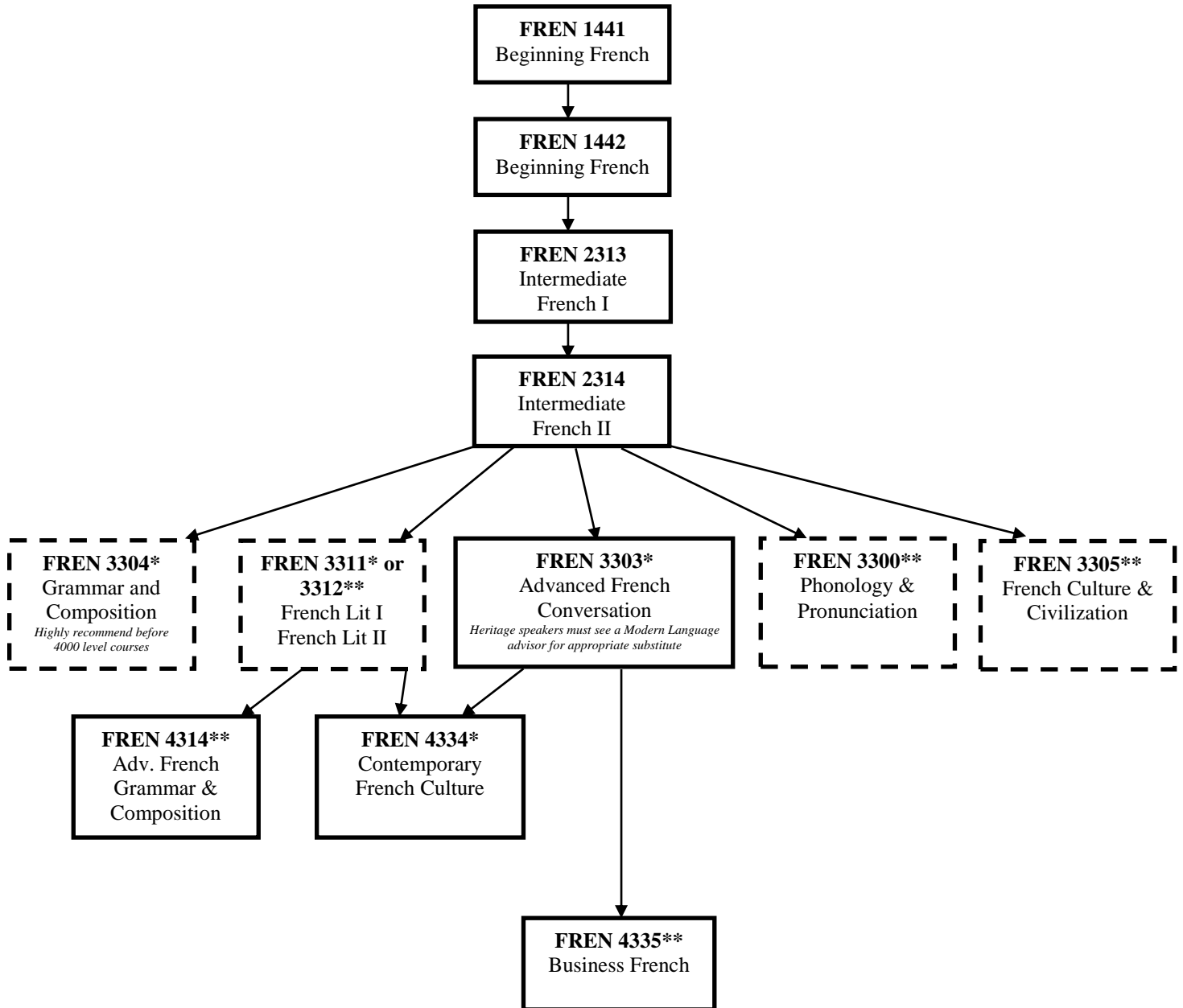
- ALL STUDENTS are responsible for meeting College of Business Admission Requirements as outlined in the *UTA Catalog*.
- Before enrolling in a course, ALL STUDENTS are responsible for consulting the catalog and completing ALL required Prerequisite courses.
- ALL Business electives must be advanced: 3000 or 4000 level.
- ELECTIVES outside Business may be 1000, 2000, 3000, or 4000 level.
- COB Residency Requirements:
 - 27 hours of business coursework completed at UTA.
 - 24 of last 30 hours of Jr/Sr level coursework must be completed at UTA.
 - Transfer courses must be pre-approved by Business Undergraduate Advising.

Notes:

- A. Due to AACSB accreditation, the following courses are NOT used on Business Degree Plans: 1) Intro to Business 2) College Adjustment 3) Secretarial courses 4) Vocational/Technical 5) WECM courses
- B. Courses in EXSS, EXSA, or theory courses in ROTC may be used for outside electives.
- C. MATH 1302 or 1325 may substitute for MATH 1315. MATH 1426 may substitute for MATH 1316.
- D. The Language/Philosophy/Culture requirement must be selected from an approved list as found in the *UTA catalog*.
- E. The Creative Arts requirement is satisfied by one of the following: ART 1301, 1309, 1310; ARCH 1301; MUSI 1300; THEA 1342 or 1343.
- F. BUSA 2304, ECON 2337, and FINA 2310 may not be utilized to meet Business degree requirements, or for grade points. Accounting majors may not utilize ACCT 3309 to meet degree requirements or for grade points. Business Foundation courses may not be used for credit toward any Business degree.
- G. Selected ROTC studies courses may substitute for advanced Business electives. See Advisor.
- H. Selected Industrial Engineering courses may substitute for certain Business courses. See Advisor.
- I. Only computer courses with major Management Information Systems element may substitute for INSY 2303. See Degree Plan Evaluator for possible substitution of a specific course.
- J. Freshman or Sophomore level Statistics classes completed at other institutions may be validated if the second half of these courses (Bstat 3322) is completed at UTA.
- K. Business electives and area of concentration electives should be selected to enrich a student's academic experience. See advisors for assistance in the selection of these electives.

BBA – International Business/French Course Flow

Prerequisites: Are courses or requirements that must be completed **before enrollment** in a course.



Required courses

Recommended electives

Attention: IB French students may take up to 6 hours of French as advanced electives. *The recommended electives listed, as well as the required 3303, are for non-heritage students only. Heritage speakers must see a Modern Language advisor for the appropriate substitute.*

* These courses are generally offered in the Fall semester only.
 ** These courses are generally offered in the Spring semester only.

Accelerated French (1441/1442 and 2313/2324) is available for students with 2 or 3 years of high school experience.

For a complete list of degree requirements, course descriptions, or a complete list of prerequisites for business courses, please consult your Undergraduate Catalog.