

# ACCOUNTING - BBA

## Effective Fall 2017 - 2018

## Degree Requirements

<u>GENERAL EDUCATION</u>		<u>BUSINESS CORE</u>	
Engl 1301, 1302	6	Acct 2301	3
Math 1315	3	Acct 2302	3
Math 1316	3	Econ 2305	3
Life and Physical Science (w/ Lab)*	6	Econ 2306	3
Language/Philosophy/Culture*	3	Insy 2303	3
Creative Arts*	3	Bcom 3360****	3
Hist 1311 and 1312	6	Blaw 3310	3
Pols 2311 and 2312	6	Bstat 3321	3
Fina 2330 or Mana 2302	3	Fina 3313	3
Coms 1301	3	Mana 3318	3
Non-business elective	<u>3</u>	Mark 3321	3
		Opma3306	3
		Mana 4322	<u>3</u>
<b>TOTAL</b>	<b>45</b>	<b>TOTAL</b>	<b>39</b>

**In addition to the above requirements, a student must fulfill course requirements listed.**

<u>ACCOUNTING CONCENTRATION</u>		<u>ADVANCED BUSINESS COURSES</u>	
Acct 3303, 3311**	6	Econ Elective	3
Acct 3312, 3315	6	Business Electives***	<u>12</u>
Acct 4302, 4318****	6		
Acct 4304 or 4325****	<u>3</u>		
<b>TOTAL</b>	<b>21</b>	<b>TOTAL</b>	<b>15</b>

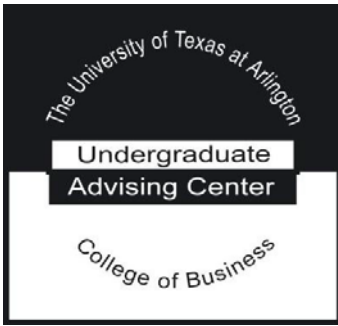
\*\*Must pass Departmental Entrance Exam before enrollment.  
 \*\*\*Acct 3304 or Acct 4380 may be used as advanced business electives only. If completed, the grade earned in Acct 3304 or Acct 4380 will not be used in calculating the overall accounting grade point average. ACCT 3309 will not be used towards an Accounting degree.  
 \*\*\*\*Accounting students interested in pursuing the Fast-Track Accounting Program should not take these courses until speaking with an Accounting Advisor.

### TOTAL NUMBER OF HOURS REQUIRED FOR A BBA ACCOUNTING DEGREE

GENERALEDUCATION	45
BUSINESSCORE	39
CONCENTRATION & ELECTIVES	<u>36</u>
<b>TOTAL</b>	<b>120</b>

\*For a list of eligible courses, see "General Core Curriculum for a Bachelor's Degree" in the University Catalog <http://catalog.uta.edu>.

<http://www.uta.edu/business/uqadvise>



# ACCOUNTING - BBA

## Four Year Plan

Fall 2017 - 2018

Complete degree requirements and course prerequisites can be found at <http://catalog.uta.edu>.

### FIRST YEAR

---

#### **First Semester - 15 Hours**

ENGL 1301      Composition I  
MATH 1315      College Algebra for Econ. & Bus. Analysis  
HIST 1311      History of the U.S. to 1865  
Life & Physical Science (3 hours)  
COMS 1301      Fundamentals of Public Speaking

#### **Second Semester - 15 Hours**

ENGL 1302      Composition II  
MATH 1316      Mathematics for Econ. & Bus. Analysis  
HIST 1312      History of the U.S. 1865 to Present  
Life & Physical Science (3 hours)  
Creative Arts (3 hours)

### SECOND YEAR

---

#### **First Semester - 15 Hours**

ACCT 2301      Principles of Accounting I  
ECON 2305      Principles of Macroeconomics  
Social & Behavioral Science (3 hours)  
POLS 2311      Government of the U.S.  
Language, Philosophy & Culture (3 hours)

#### **Second Semester - 15 Hours**

ACCT 2302      Principles of Accounting II  
ECON 2306      Principles of Microeconomics  
INSY 2303      Introduction to M.I.S. & Data Processing  
POLS 2312      State & Local Government  
Non-Business Elective (3 hours)

### THIRD YEAR

---

#### **First Semester - 15 Hours**

ACCT 3311      Financial Accounting I  
BLAW 3310      Legal & Ethical Environment of Business  
FINA 3313      Business Finance  
MANA 3318      Managing Organizational Behavior  
Advanced Economics Elective (3 Hours)

#### **Second Semester - 15 Hours**

ACCT 3303      Introduction to Accounting Information Systems  
ACCT 3312      Financial Accounting II  
BSTAT 3321      Business Statistics I  
MARK 3321      Principles of Marketing  
\*Advanced Business Elective (3 Hours)

### FOURTH YEAR

---

#### **First Semester - 15 Hours**

ACCT 3315      Principles of Federal Income Tax  
ACCT 4302      Acct in Managerial Planning & Control  
OPMA 3306      Operations Management  
\*Advanced Business Elective (3 Hours)  
\*Advanced Business Elective (3 Hours)

#### **Second Semester - 15 Hours**

ACCT 4304/4325      Cost Accounting/Governmental  
ACCT 4318      Auditing  
BCOM 3360      Effective Business Communications  
MANA 4322      Organizational Strategy  
\*Advanced Business Elective (3 Hours)

---

**This timeline is a recommendation, strategically developed for students' success.**

- It establishes a strong foundation in the freshman and sophomore years.
- It positions pre-requisite courses appropriately for advanced coursework.
- It provides a balance in coursework throughout each year.
- It promotes a timely graduation within four years.

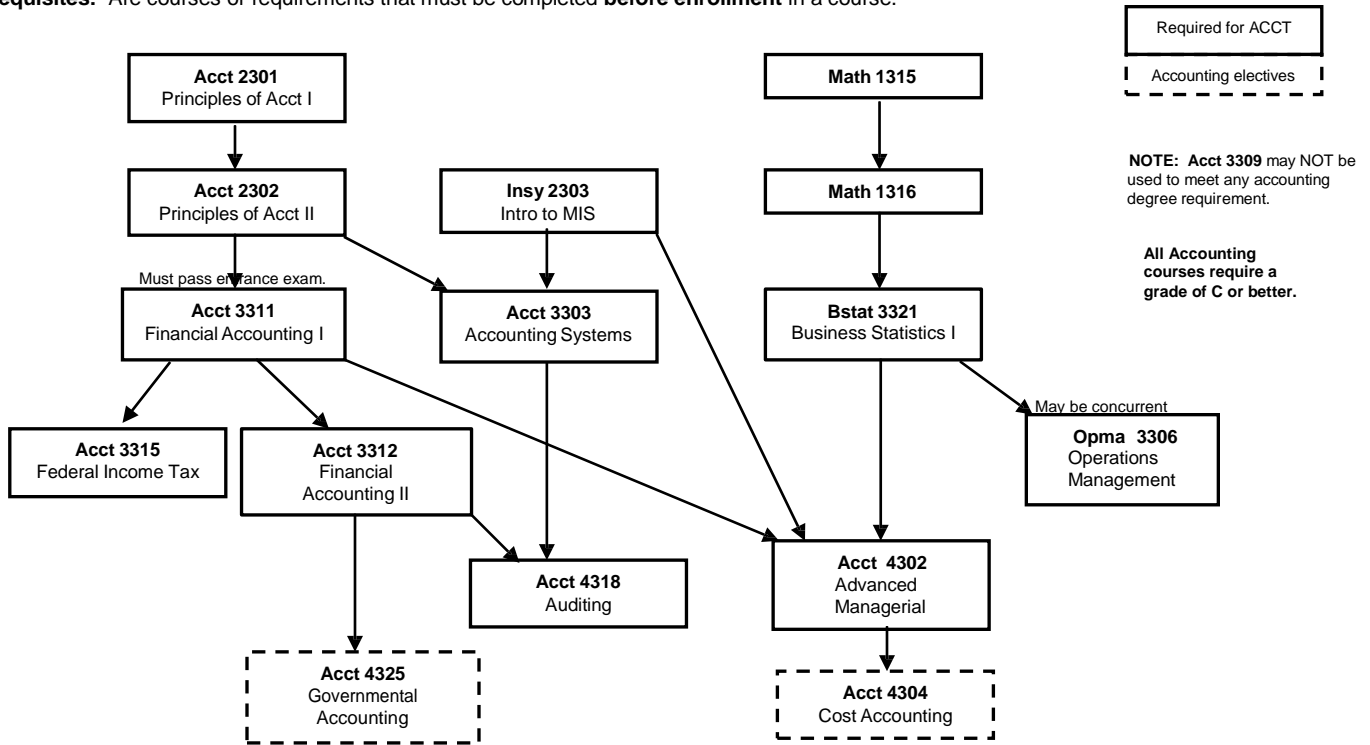
All students are subject to College of Business Admission Requirements.

\*Advanced Business Electives may not include any major prefix course.

<http://web.uta.edu/business/ugadvise>

# BBA - Accounting Course Flow (2017-2018)

**Prerequisites:** Are courses or requirements that must be completed **before enrollment** in a course.



**Attention:** Mana 4322 (Organizational Strategy) prerequisites include ACCT 2301 and ACCT 2302, BSTAT 3321, ECON 2305 and ECON 2306, FINA 3313, MANA 3318 and MARK 3321. One of the following junior level courses may be taken concurrently: BSTAT 3321, FINA 3313, MANA 3318 or MARK 3321.

## Recommended Business Elective Tracks for Accounting Majors

	<u>Finance Industry</u>		<u>Information Systems</u>		<u>Sales and Marketing</u>
ECON 3303	Money and Banking	INSY 3303	Computer Networks and Distributed Computing	MARK 3322	Professional Selling
FINA 3317	Financial Institutions and Markets	INSY 3309	Data Mining for Business Analytics	MARK 3323	Integrated Marketing Communication
FINA 4311	Money and Capital Markets	INSY 4312	Fundamentals of Information Security	MARK 4308	Management and Leadership of the Sales Force
FINA 4315	Advanced Business Financial Analysis			MANA 4341	Negotiations and Conflict Resolution
FINA 4319	Financial Derivatives				

## Important Reminders

- **ALL STUDENTS** are responsible for meeting College of Business Admission Requirements as outlined in the *UTA Catalog*.
- Before enrolling in a course, **ALL STUDENTS** are responsible for consulting the catalog and completing ALL required Prerequisite courses.
- **ALL Business** electives must be advanced: 3000 or 4000 level.
- **ELECTIVES** outside Business may be 1000, 2000, 3000, or 4000 level.
- **COB Residency Requirements:**
  - 39 hours of business coursework completed at UTA.
  - 24 of last 30 hours of Jr/Sr level coursework must be completed at UTA.
  - Transfer courses must be pre-approved by Business Undergraduate Advising.

## Notes

- Due to AACSB accreditation, the following courses are **NOT** used on Business Degree Plans: 1) Intro to Business 2) College Adjustment 3) Secretarial courses 4) Vocational/Technical 5) WECM courses.
- Courses in EXSS, EXSA, or theory courses in ROTC may be used for outside electives.
- MATH 1302 or 1325 may substitute for MATH 1315. MATH 1426 may substitute for MATH 1316.
- BUSA 2304, ECON 2337, and FINA 2310 *may not* be utilized to meet Business degree requirements or for grade points. Accounting majors *may not* utilize ACCT 3309 to meet degree requirements or for grade points. Business Foundation courses *may not* be used for credit toward any Business degree.
- Selected ROTC studies courses may substitute for advanced Business electives. See Advisor.
- Selected Industrial Engineering courses *may* substitute for certain Business courses. See Advisor.
- Only computer courses with major Management Information Systems element *may* substitute for INSY 2303. See Degree Plan Evaluator for possible substitution of a specific course.
- Freshman or Sophomore level Statistics classes completed at other institutions *may be* validated if the second half of these courses (Bstat 3322) is completed at UTA.
- Business electives and area of concentration electives should be selected to enrich a student's academic experience. See advisors for assistance in the selection of these electives.
- **To achieve graduation within four years, enroll in (15) hours each long semester (fall and spring) for total of (30) hours per academic year. An alternative to this is enrolling in (12) hours during each long semester (fall and spring) and (6) hours during the summer.**

<http://www.uta.edu/business/ugadvise>